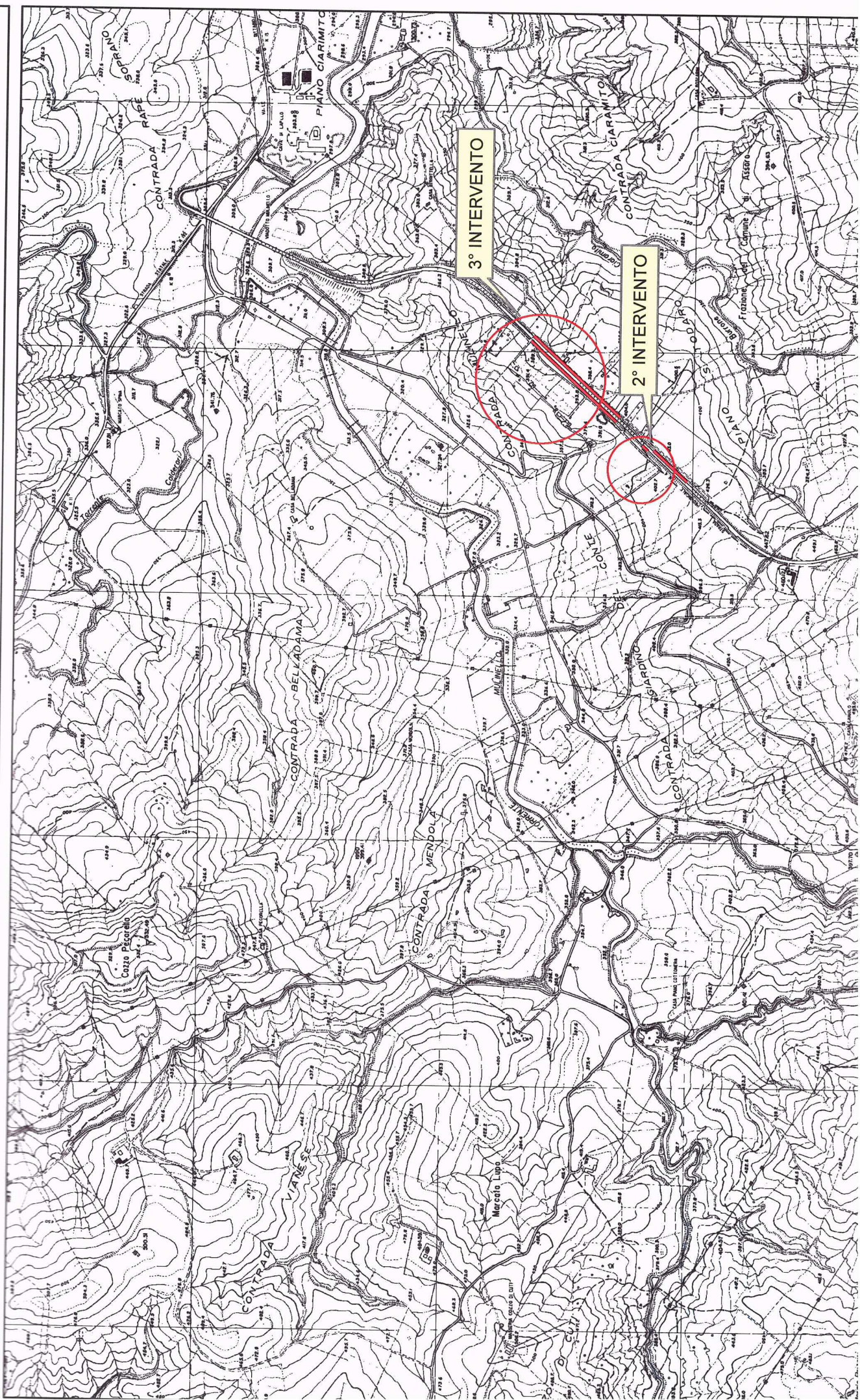
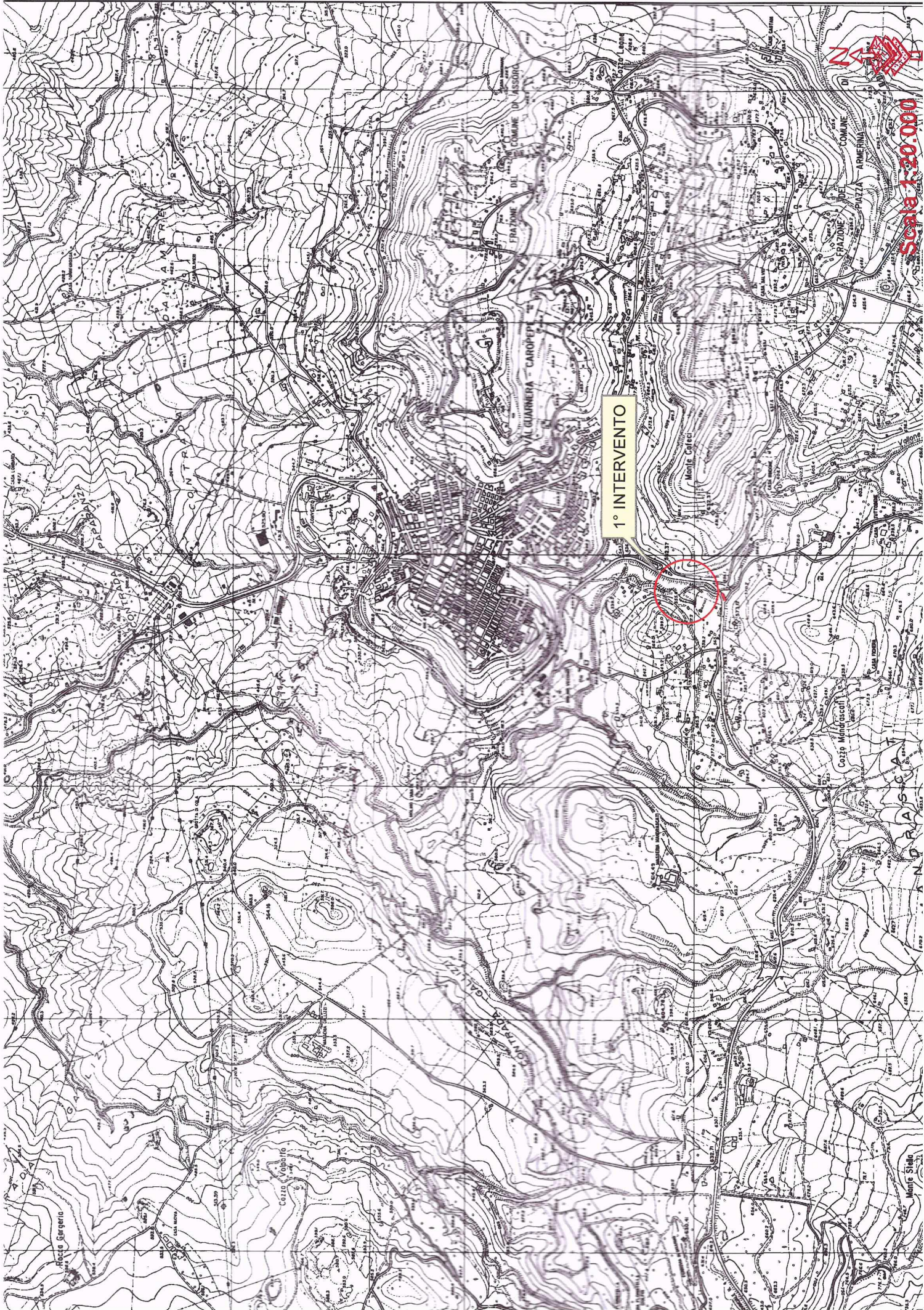


QUADRO D'INSIEME INTERVENTI SULLA SP.4





1° INTERVENTO

Scala 1:20.000



1° INTERVENTO - SP 4

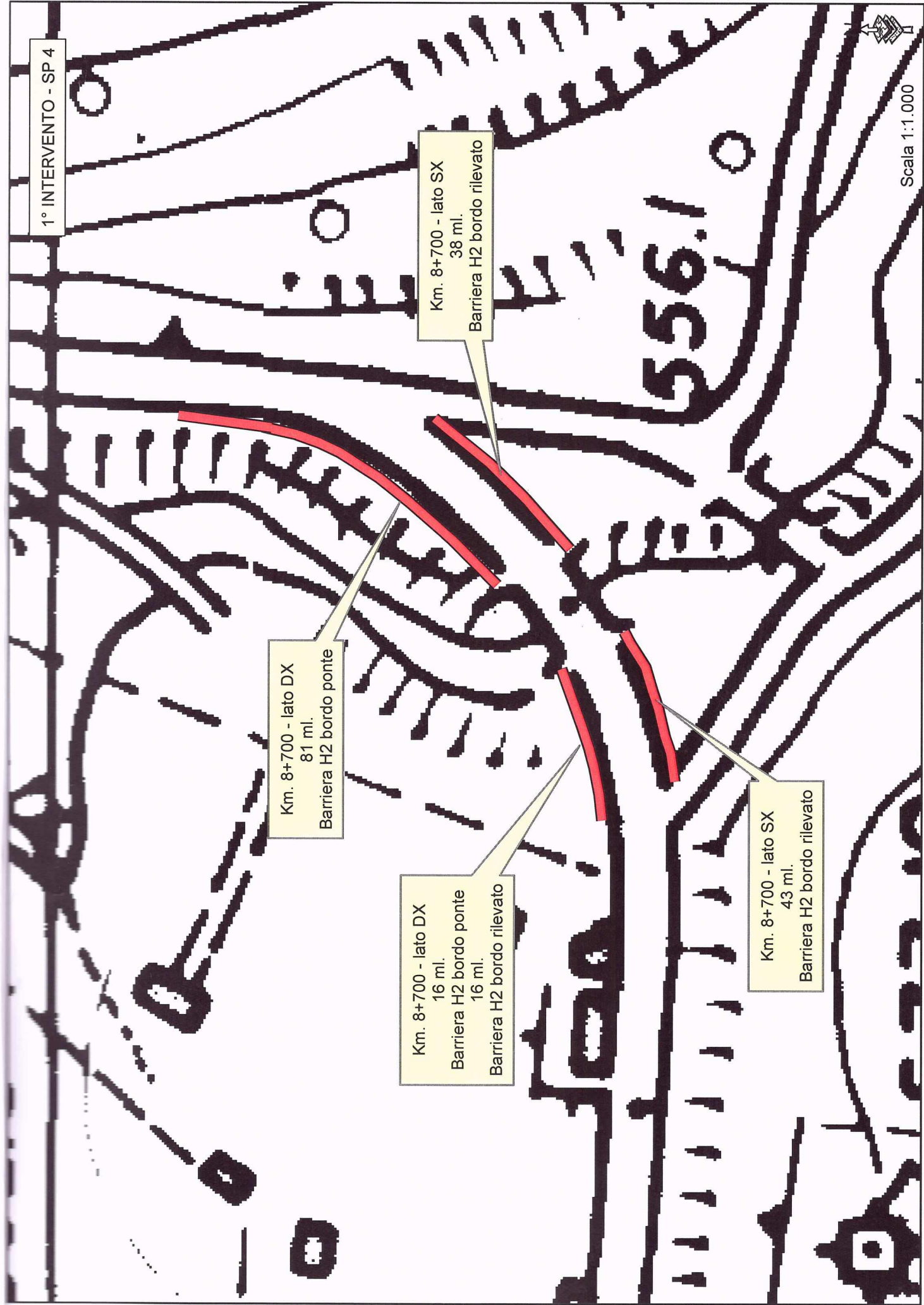
Km. 8+700 - lato DX
81 ml.
Barriera H2 bordo ponte

Km. 8+700 - lato DX
16 ml.
Barriera H2 bordo ponte
16 ml.
Barriera H2 bordo rilevato

Km. 8+700 - lato SX
38 ml.
Barriera H2 bordo rilevato

Km. 8+700 - lato SX
43 ml.
Barriera H2 bordo rilevato

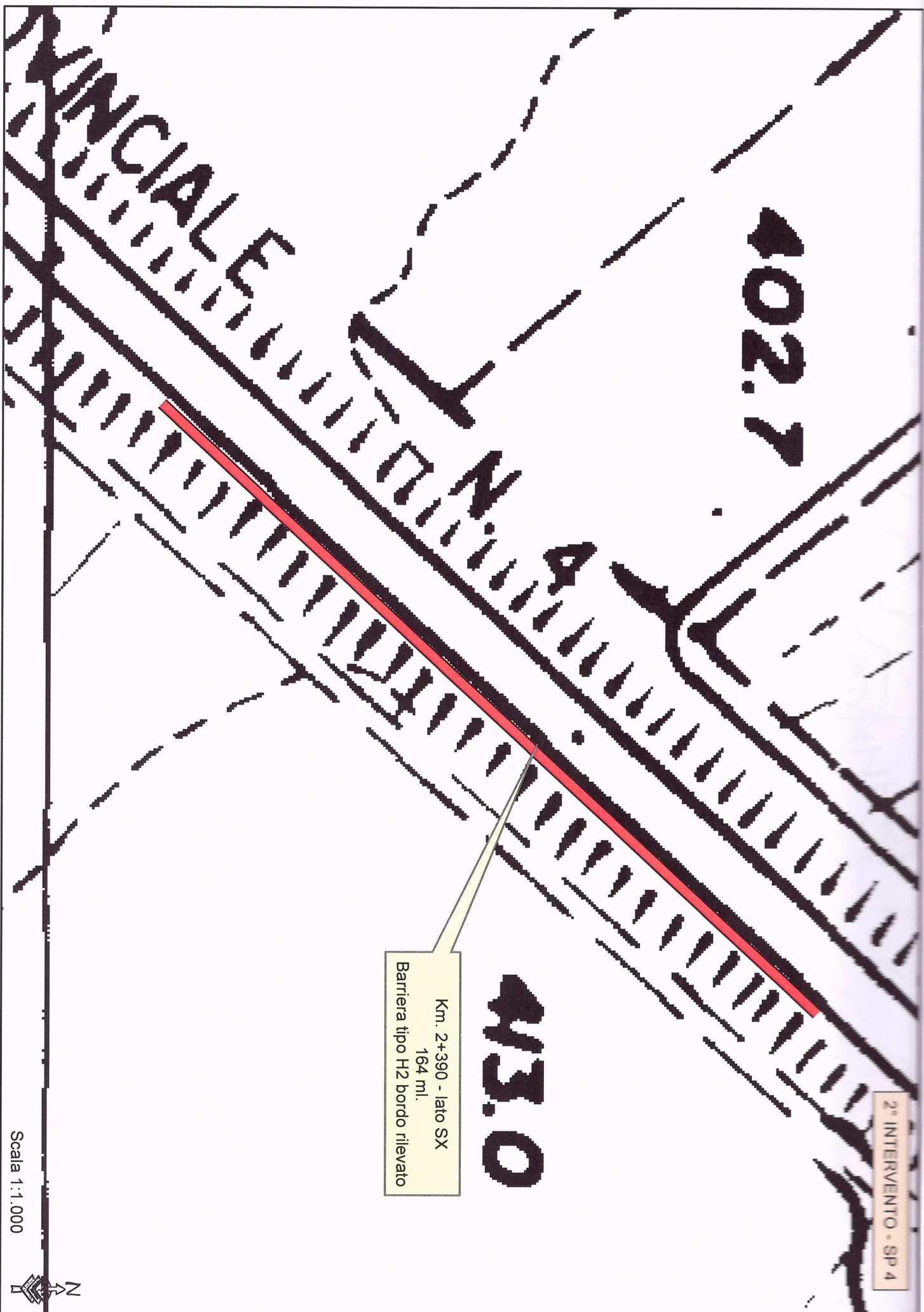
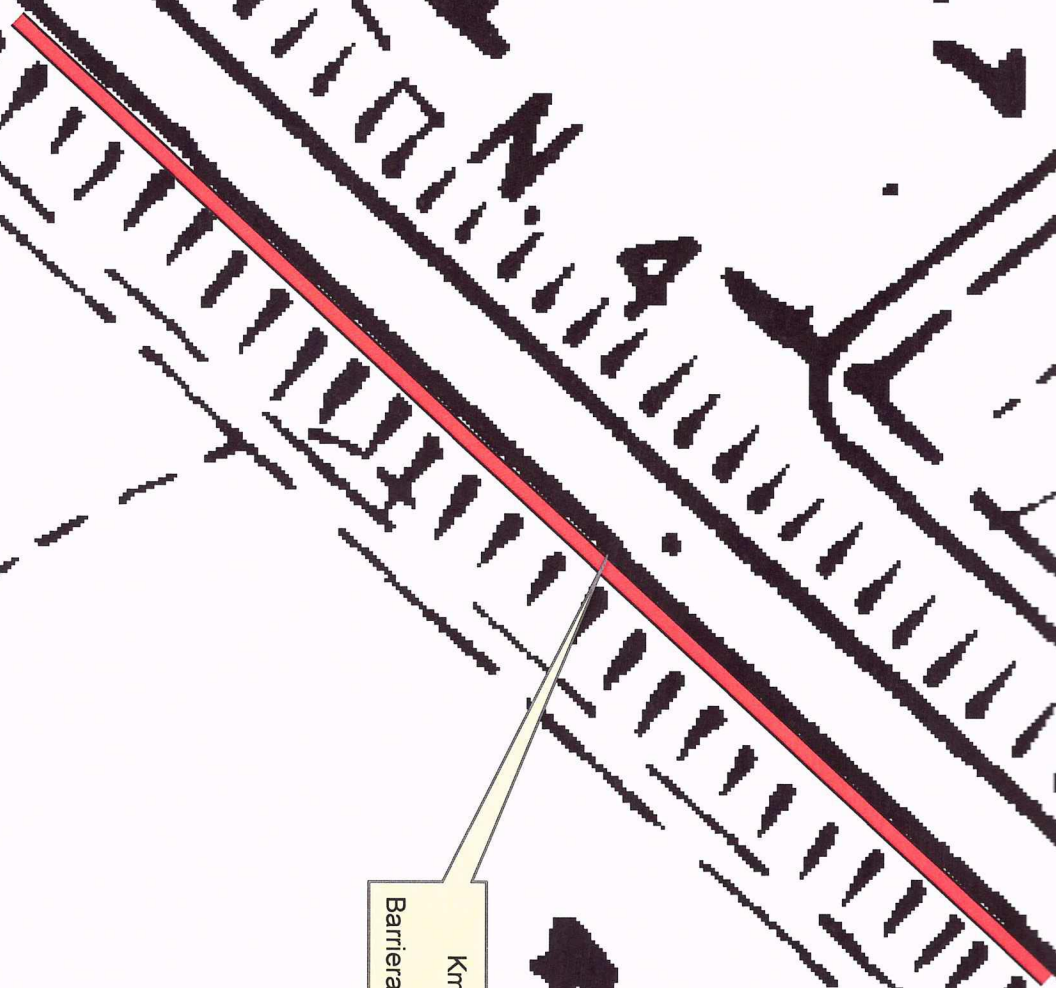
Scala 1:1.000



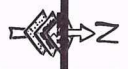
102.7

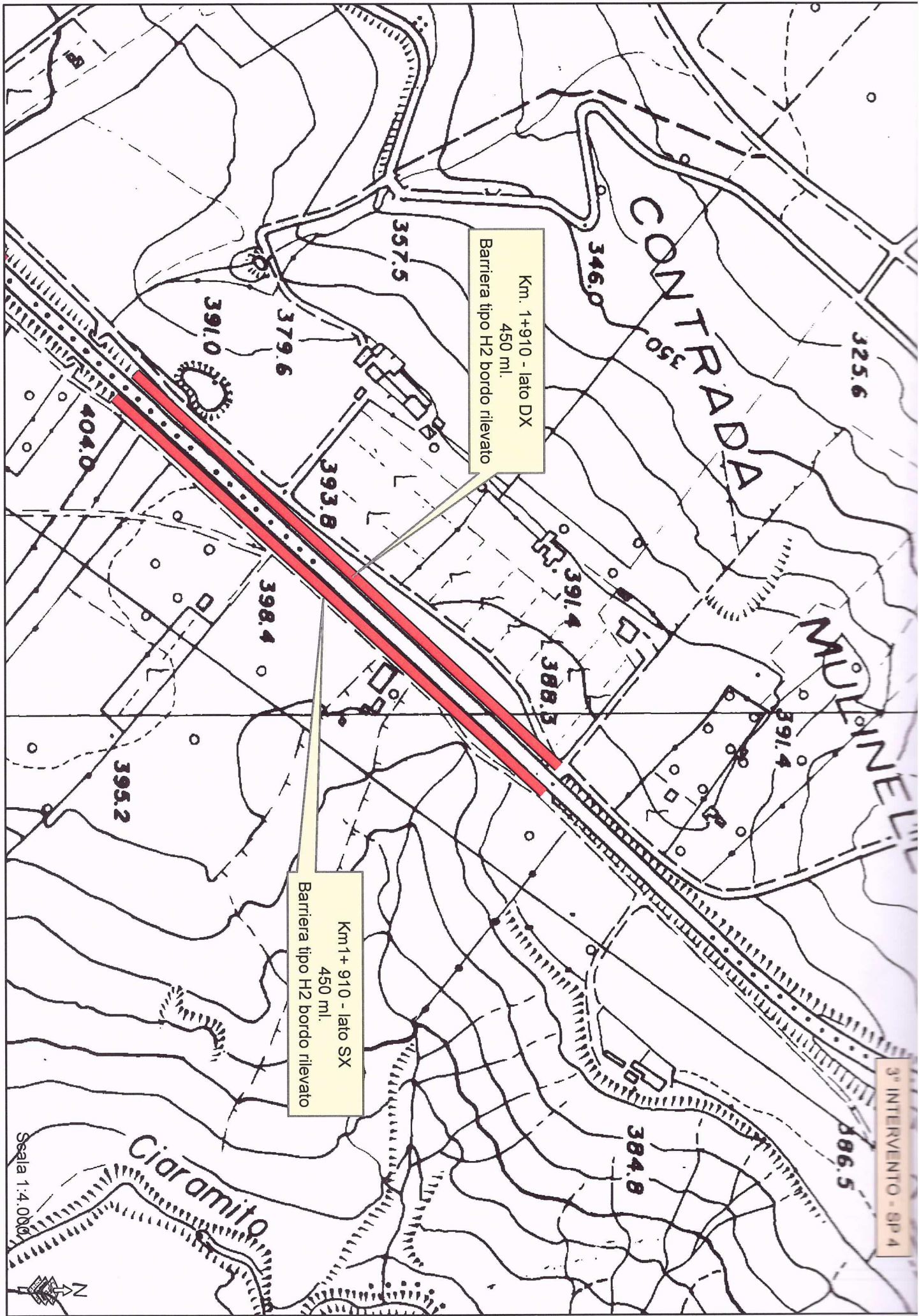
113.0

Km. 2+390 - lato SX
164 ml.
Barriera tipo H2 bordo rilevato

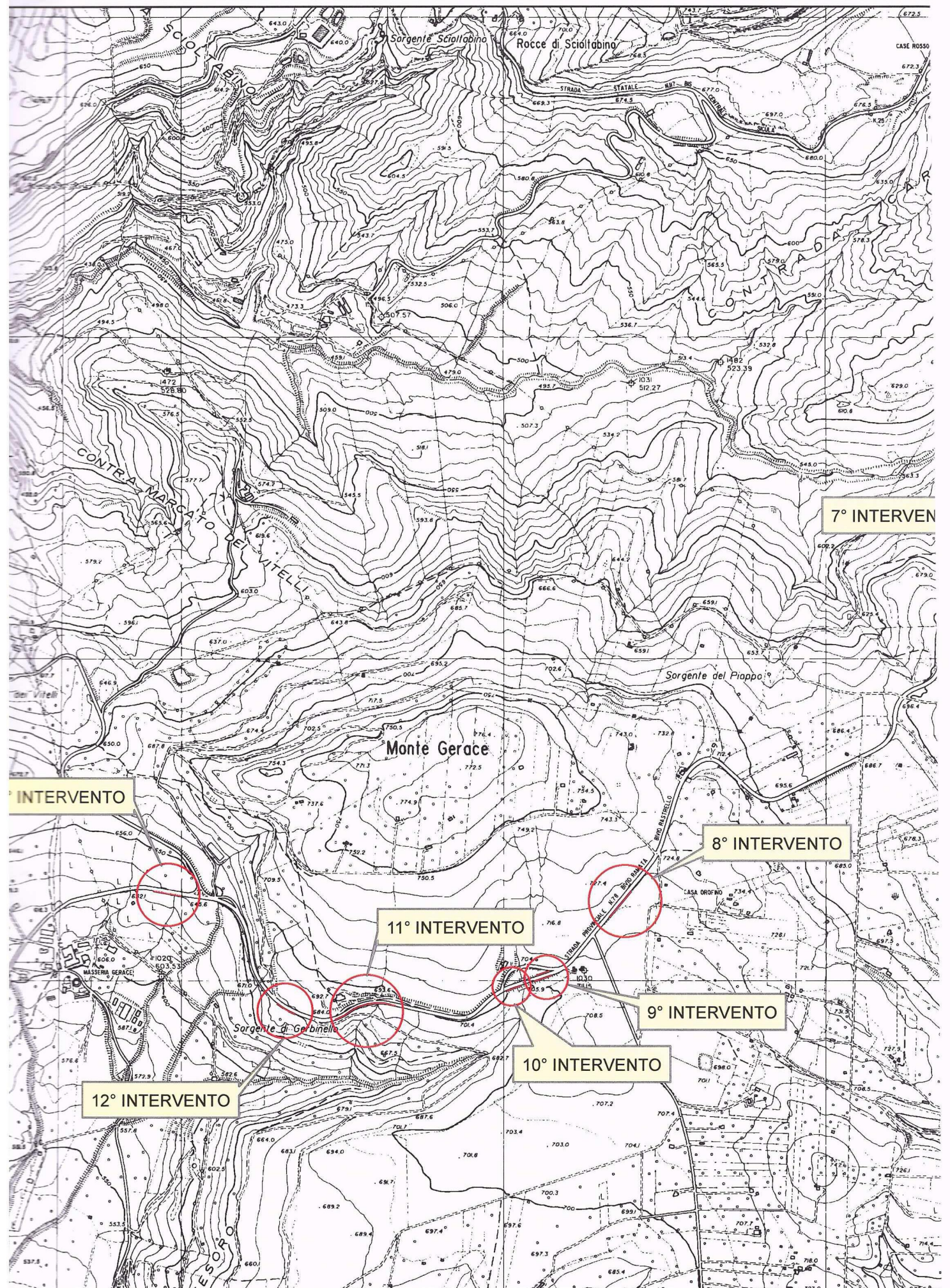


Scala 1:1.000

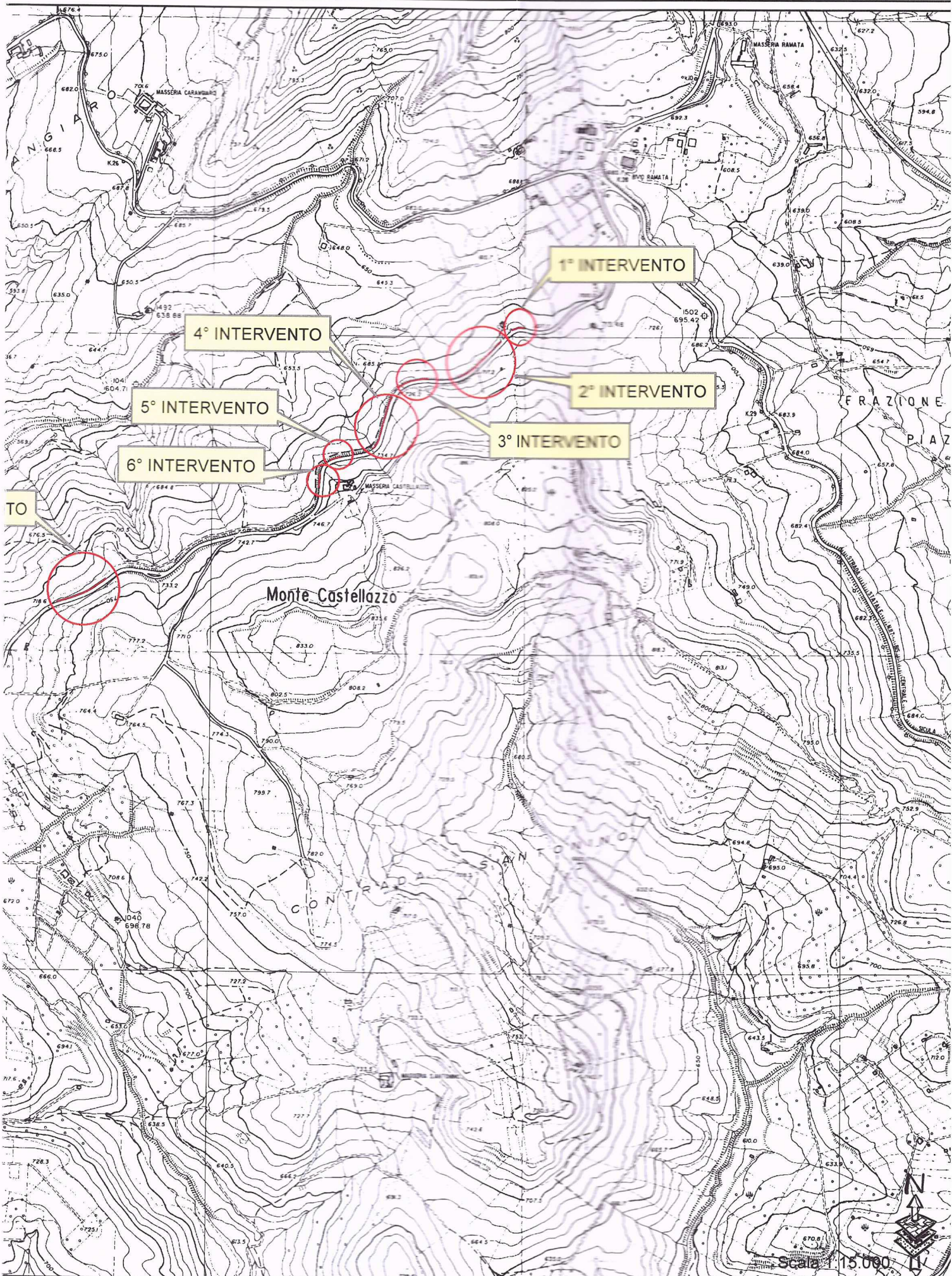




QUADRO D'INSIEME IN



INTERVENTI SULLA SP. 78



1° INTERVENTO - SP 78

Km. 0+700 - lato DX
48,50 ml
Barriera tipo H2 bordo rilevato

707.7

Scala 1:1.000



Km. 0+800 - lato DX
34,40 ml
Barriera tipo H2 bordo rilevato

Km. 0+800 - lato DX
132,00 ml
Barriera tipo H2 bordo rilevato

717.2



3° INTERVENTO - SP 78

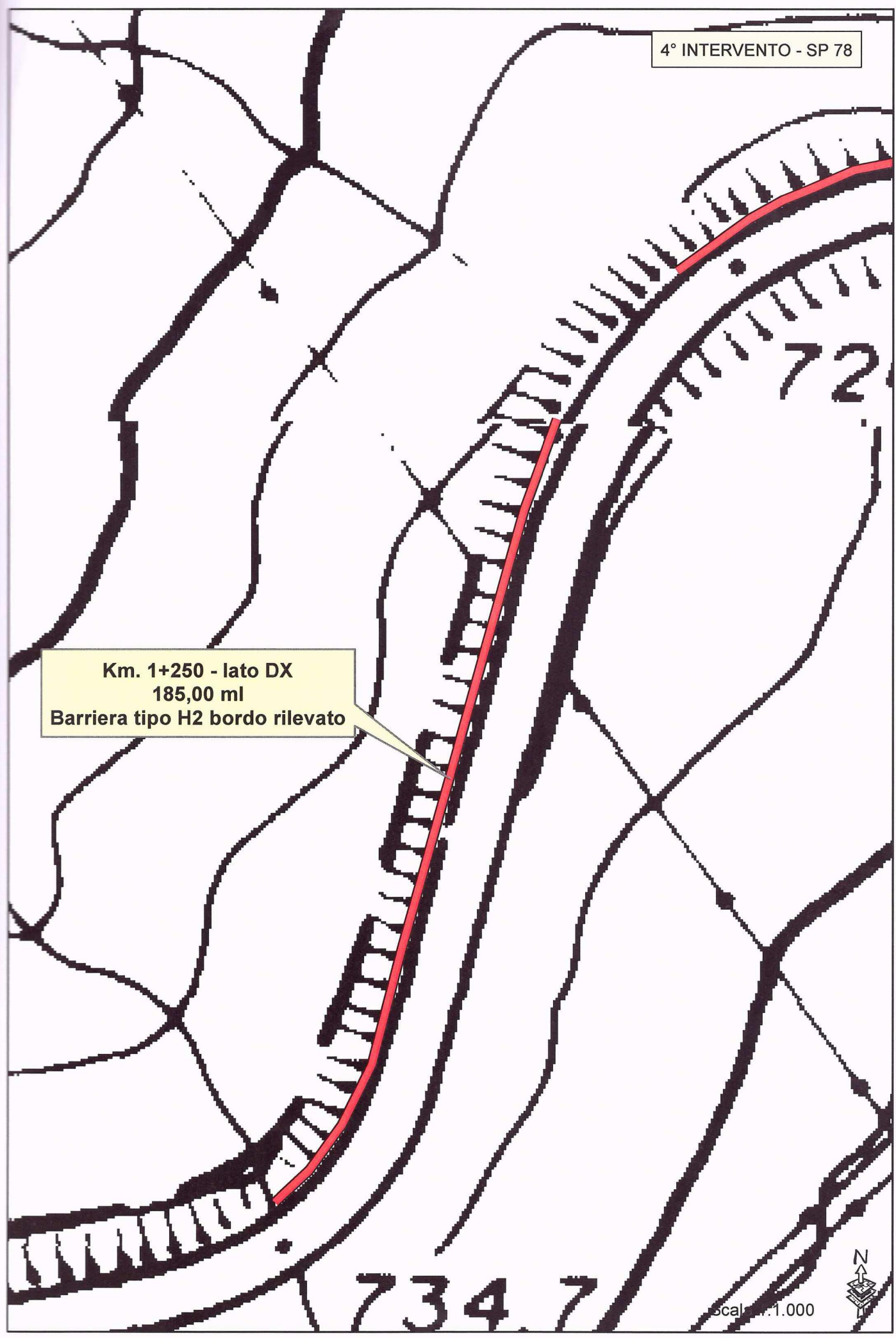
Km. 1+100 - lato DX
96,50 ml
Barriera tipo H2 bordo rilevato

26.2

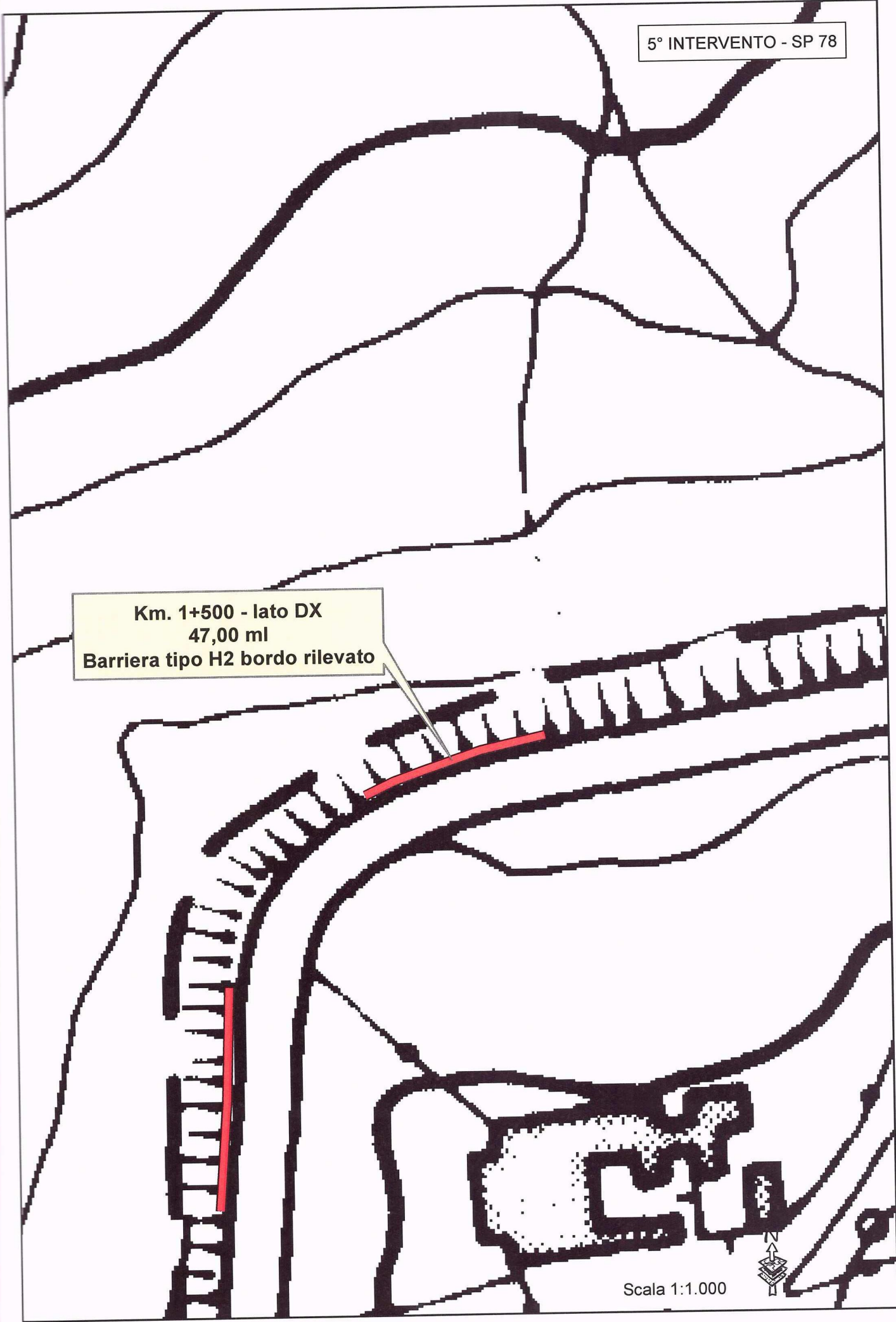
Scala 1:1.000



Km. 1+250 - lato DX
185,00 ml
Barriera tipo H2 bordo rilevato



Km. 1+500 - lato DX
47,00 ml
Barriera tipo H2 bordo rilevato



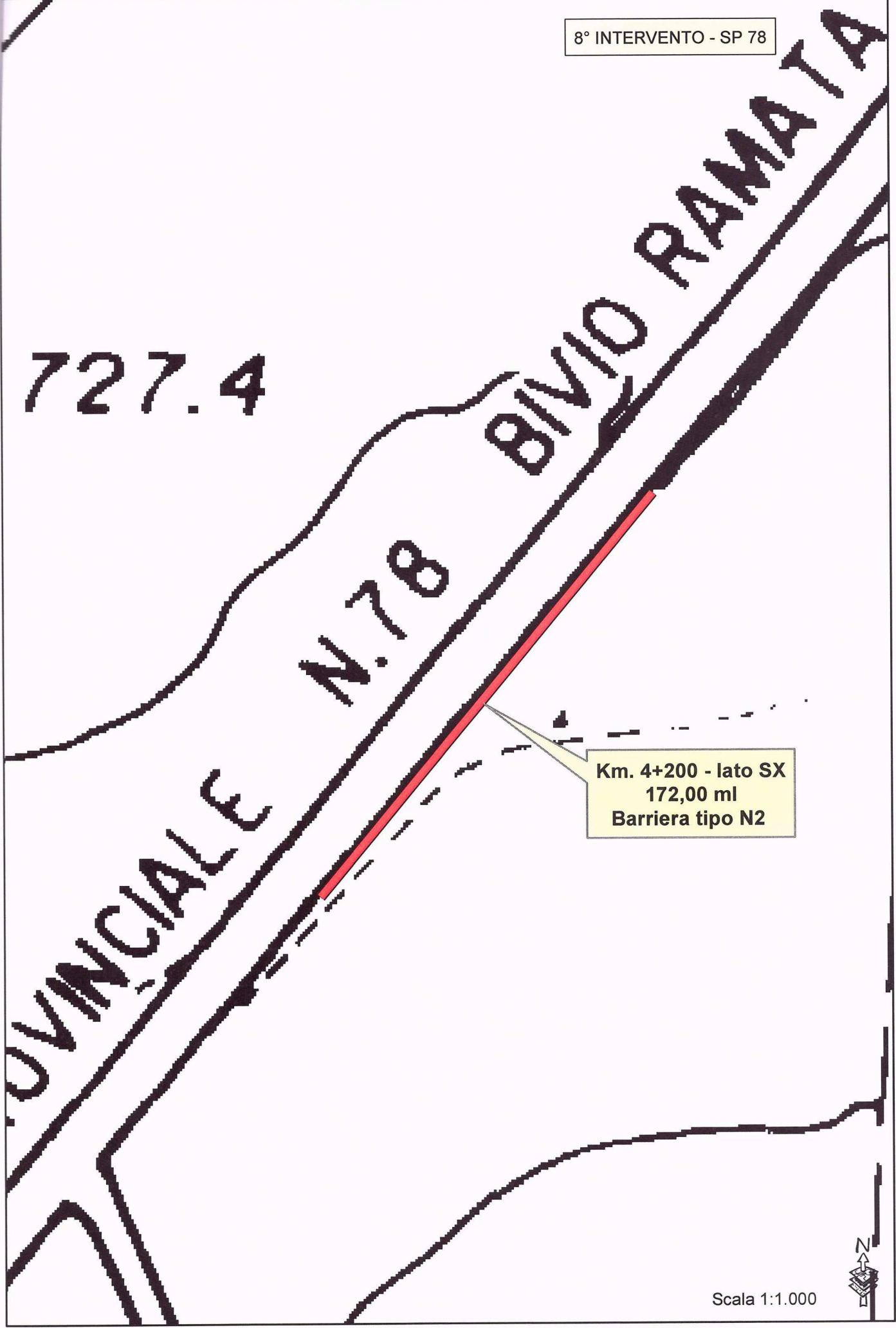
Km. 1+600 - lato DX
53,00 ml
Barriera tipo H2 bordo rilevato



Km. 2+400 - lato DX
172,00 ml
Barriera tipo H2 bordo rilevato



727.4



704.6

Km. 4+600 - lato DX
45,00 ml
Barriera tipo N2

705.9

Km. 4+600 - lato SX
57,00 ml
Barriera tipo N2

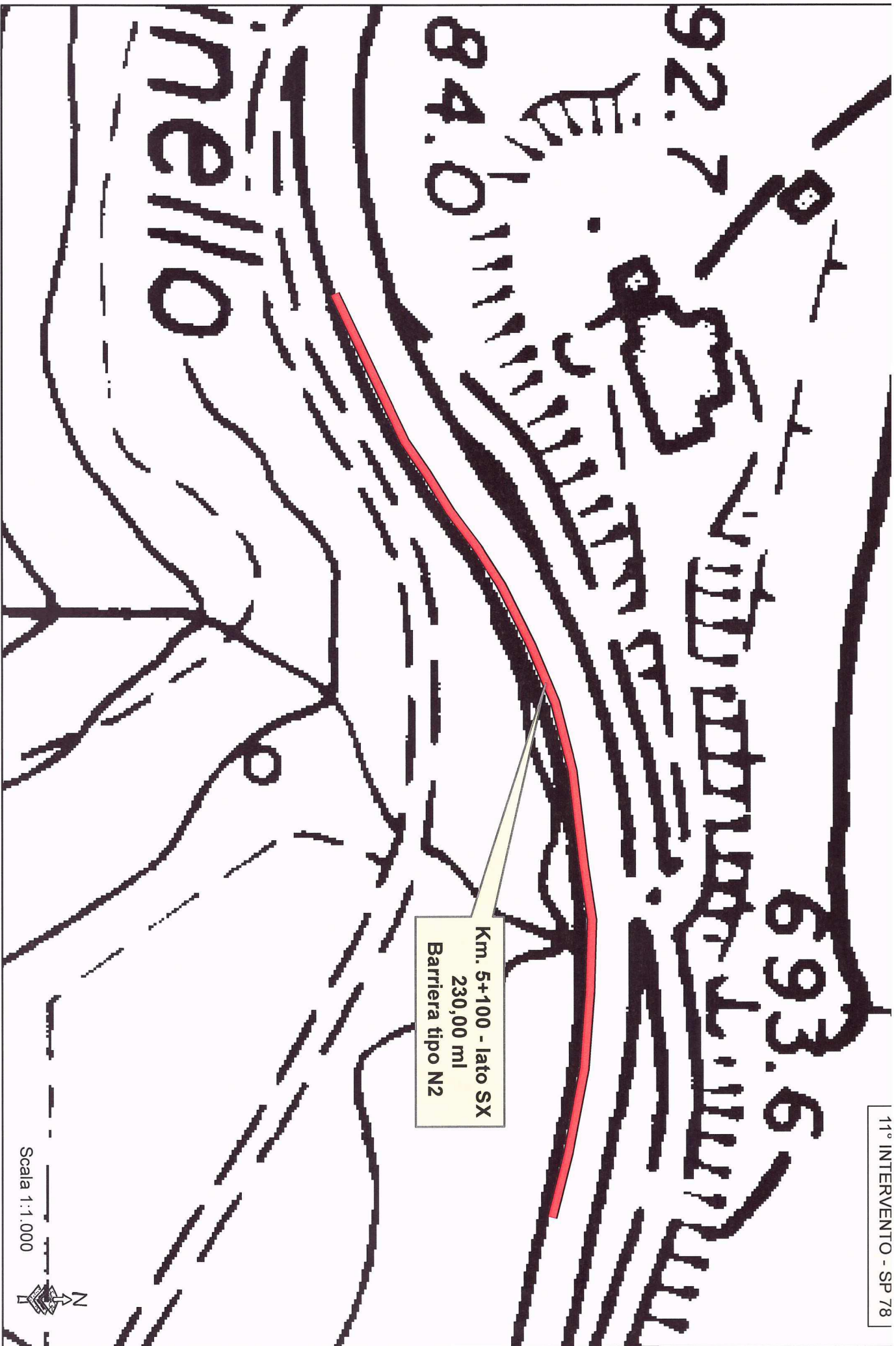


704.6

705

Km. 4+700 - lato SX
52,00 ml
Barriera tipo N2





Km. 5+400 - lato SX
63,00 ml
Barriera tipo N2

692.7

684.0

di Gerbinello



Km. 6+000 - lato SX
83,00 ml
Barriera tipo N2

643

